



From Cupboard to Creativity Project

Nov 2022 - Blocks that link with secondary patterns

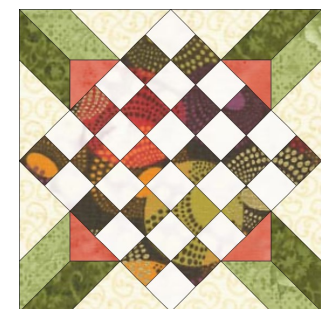
Block this month: Checkered Star

Hi Everyone,

When choosing the block for this month, I didn't want Half Square triangles or Flying geese units, so I was inspired by all the racing checkered flags over the weekend and looked through my Jinny Beyer book for checkered inspired blocks, and found this one: Checkered Star. →



It is a large block of 18" when made, and the centre was made of a checkered 9 x 9 squares. The cutting of this would have required $1 \frac{15}{16}$ " (so I have changed it to 6x6 squares which can be cut at $2 \frac{5}{8}$ " which is much easier) The centre square when made should measure $13 \frac{1}{4}$ " including the seam allowance.



This block can be coloured in many ways, and when linked with other blocks creates the star in the corners —I have included a few options on the next page— ideas for big and smaller quilts or a bed or table runner (some with the 9x9 and others 6x6 square centre).

I have given a quilt colour plan page and a block colour plan for the 6x6 version which shows the placement of the shapes for the corners.

Have fun playing with this block option for November (*As an even quicker block if you have a lovely print fabric you wish to use, you may prefer to change the checkered centre for a single fabric square cut $13 \frac{1}{4}$ "*)

Because this is a larger block, you may decide you would like to use it as a centre for a larger quilt and build out with other border styles.

Don't forget that these Challenge ideas are a starting point for you to create quilts to suit your needs and the fabrics you are wanting to use.

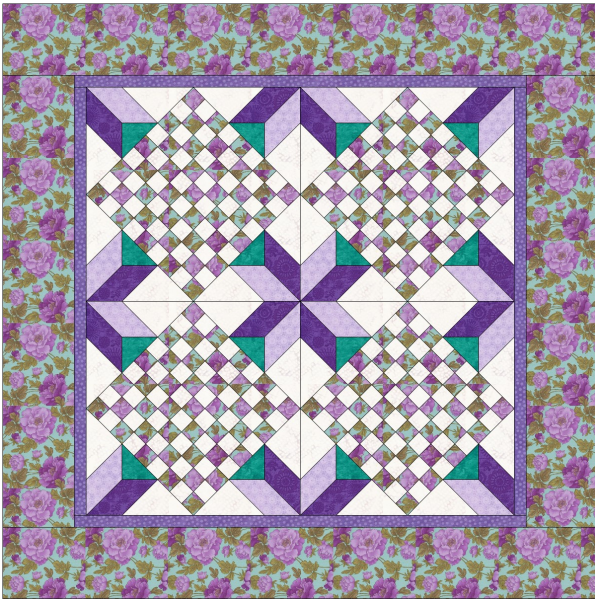
Have fun creating.

Jan P

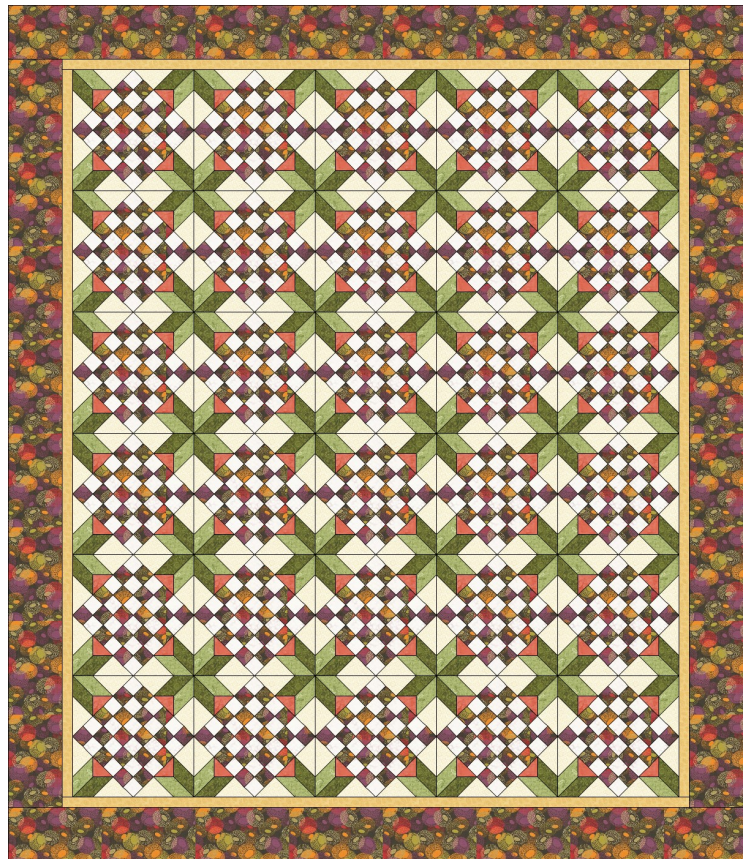
From Cupboard to Creativity Project

Nov 2022 - Blocks that link with secondary patterns

Block this month: Checkered Star (6x6 centre)



9 x 9 checkered centre
(note that with odd numbers
there is a coloured square in
each corner)



6 x 6 checkered centre



Change the number of borders and their width to make the quilt that suits your needs.

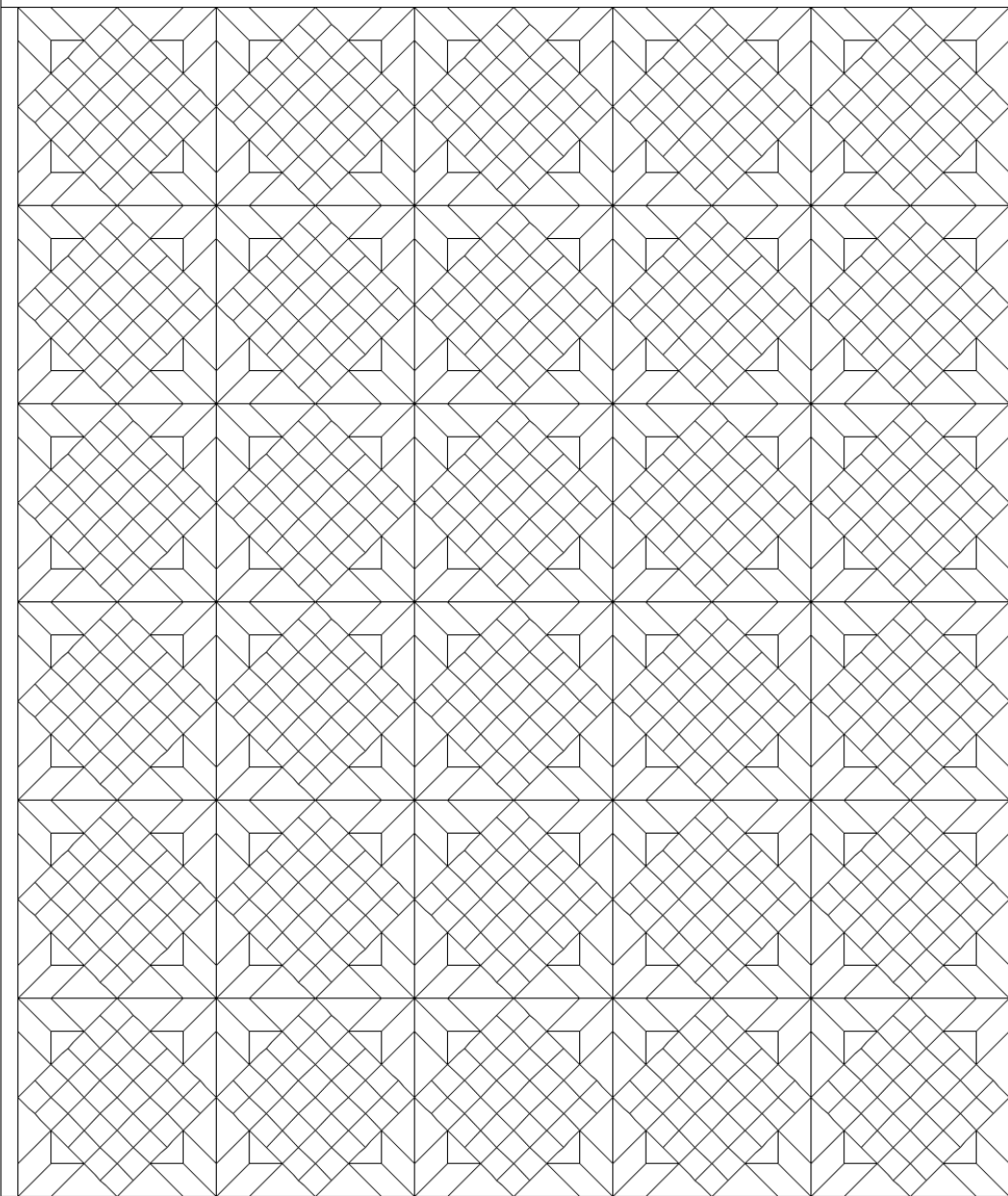


From Cupboard to Creativity Project

Nov 2022 - Blocks that link with secondary patterns

Block this month: Checkered Star (6x6 centre)

Planning page for your quilt



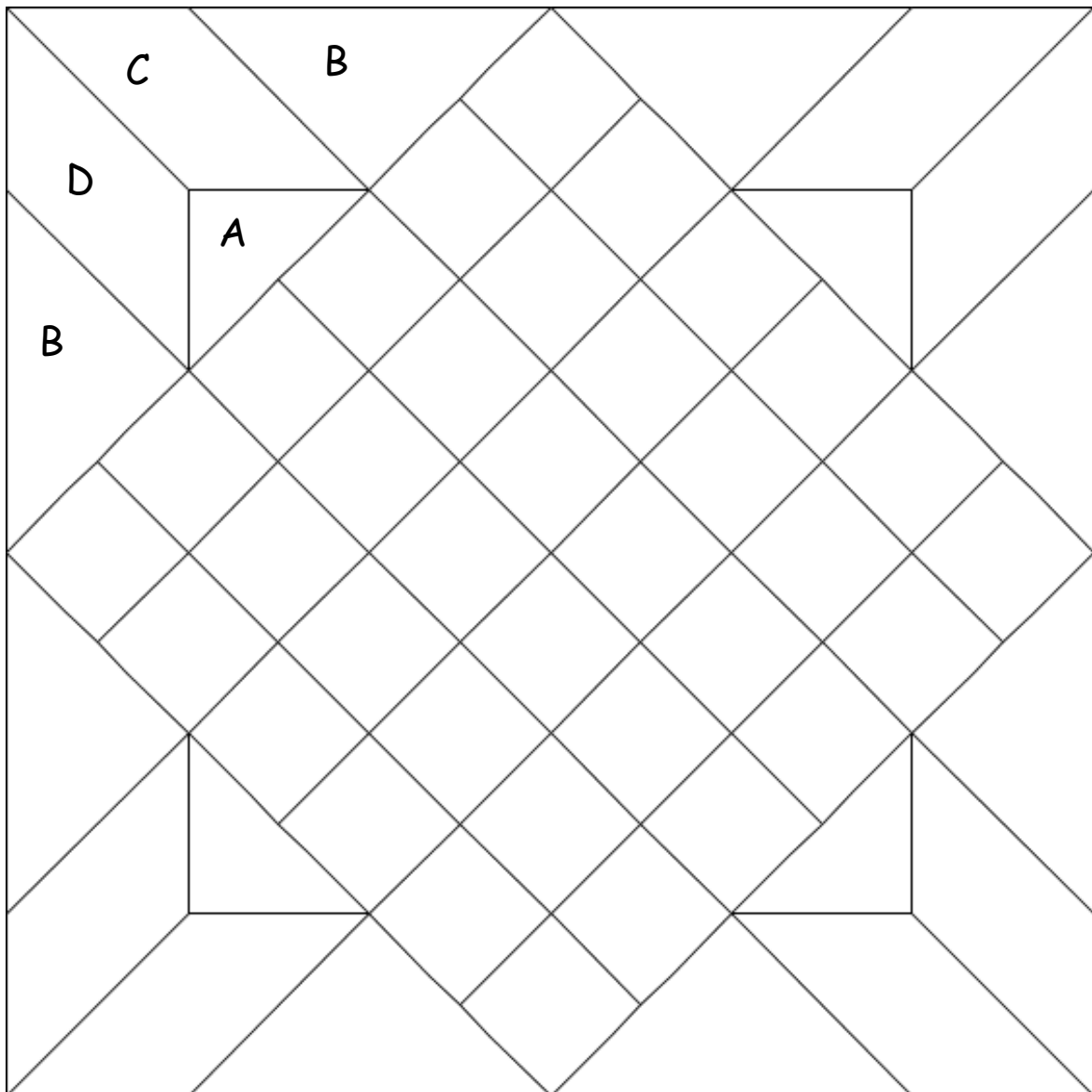


From Cupboard to Creativity Project

Nov 2022 - Blocks that link with secondary patterns

Block this month: Checkered Star (6x6 version)

Block colour plan page





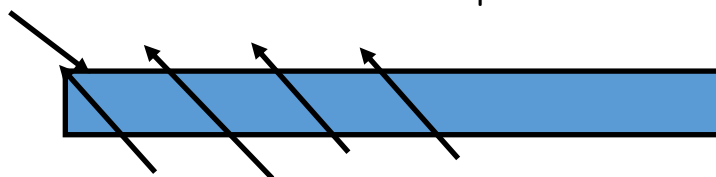
From Cupboard to Creativity Project

Nov 2022 - Blocks that link with secondary patterns

Block this month: Checkered Star (6x6 version)

To Make up the block ([section letters are illustrated on previous plan page](#)).

- For the checkered centre cut 2 strips $2\frac{5}{8}$ " in each of your chosen 2 fabrics, cut them in half (you may need more as this will depend on how many blocks you want to make). Using 3 of each colour sew them together alternately to form a band of 6 strips. Check the band width measures $13\frac{1}{4}$ " including the seams, press seams all in 1 direction. (If you wish to use scraps of various fabrics to form the centre, each square is cut $2\frac{5}{8}$ ")
- Cross cut the band into $2\frac{5}{8}$ " strips—you will need 6 per block. Lay the strips down as you cut them, then turn every second strip the opposite way and rejoin them to make the centre. The colours will form the checker pattern & the seams will nest together for accurate piecing. Check measurement is $13\frac{1}{4}$ " square including seams.
- To make the four corners sections:
You will need two squares of $3\frac{7}{8}$ " cut per block and then cut each on 1 diagonal — these are for the triangle (A)
You will need 2 squares cut of $7\frac{1}{4}$ " each per block then cut on both diagonals to give the 8 triangles (B) for the outer frame of the block.
- For the star points cut a strip of $2\frac{5}{8}$ " in each colour for C & D, place them wrong sides together with C uppermost (this will create the mirrored shapes for both sections, trim a 45 degree angle at the ends of the strip, then cut parallel to this new edge $3\frac{1}{2}$ " wide. You need 4 pairs for each block.



- Sew 1 C & D section together on longer edge, leaving open the seam allowance on the inside end at ~~X~~. Secure the seam with a backstitch. Press this seam open, then inset the A triangle at this end. Press seam away from triangle A.

- Sew a B triangle to each side of this section then attach the whole corner to the checkered centre square. Repeat for the other 3 corners.

- Your block should now measure $18\frac{1}{2}$ " including seam allowance.

