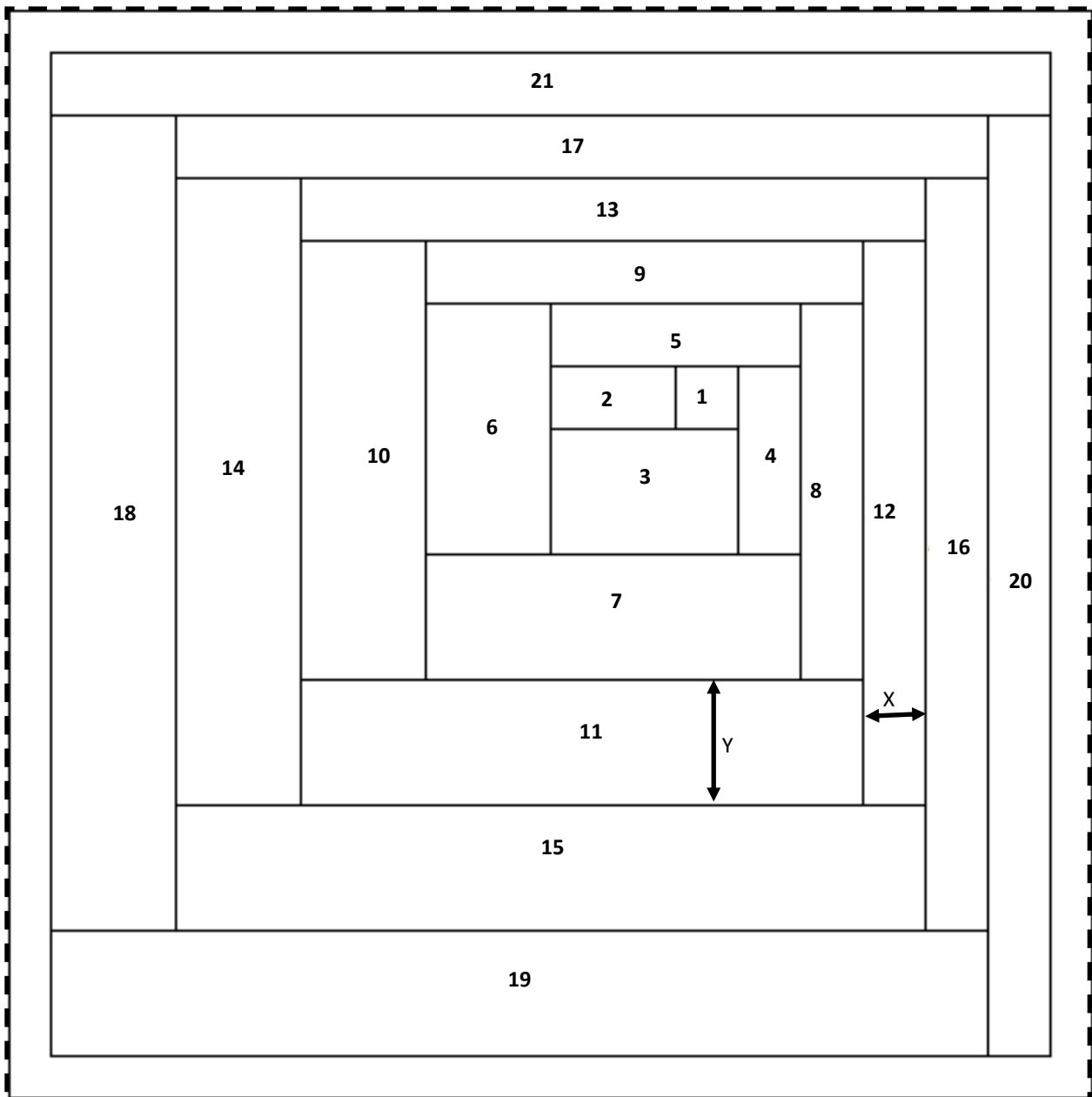


Cupboard to Creativity March 2023 Curved Log Cabin

For March we look at a block using straight seams to create curves.



[Use this pattern as a master sheet](#) - the numbers are the order to sew on strips

Print at 100% for a 4" finished block

Check final seam allowance is $\frac{1}{4}$ "

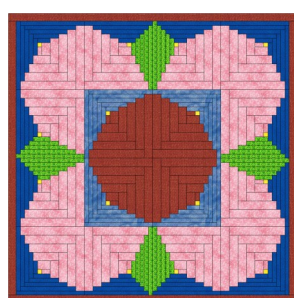
Print at 150% for a 6" finished block

after printing

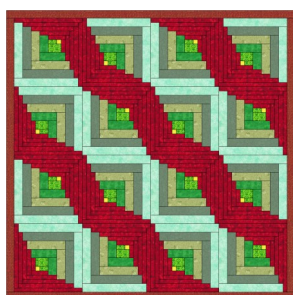
Print at 200% for an 8" finished block

For the width to cut your strips, create the printed pattern for your chosen size block, then measure at X (for narrow strip) then add $\frac{1}{2}$ " to give cutting width of strips. Repeat for Y (for wide strips)

Cupboard to Creativity March 2023 Curved Log Cabin

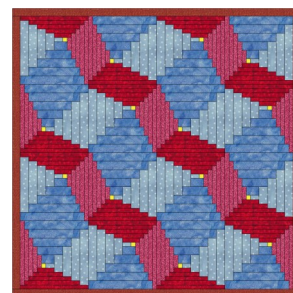


A

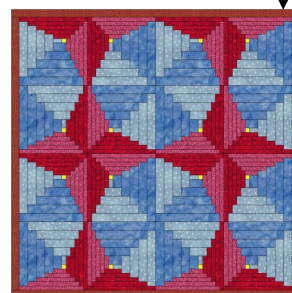


B

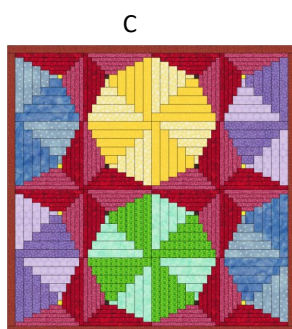
These quilts have
Same layout
different colours



Turn these blocks
Keep same colours



These two quilts
Have the
Same layout in
different colours



C

Use 4 blocks together
to make the centre
circle shape.
Play with block
arrangement for the
border round and change $\frac{1}{2}$
of the narrow strips
colours in the (green)

Above I have shown a number of different ways the same block can be used, and as you will see the pattern can change just with colour use or by turning the blocks.

You may wish to print a few blank copies of the block to experiment with colours and your own quilt design.

On the next page I have given you the layout for quilts A, B & C that you can enlarge & colour plan if you like the style.

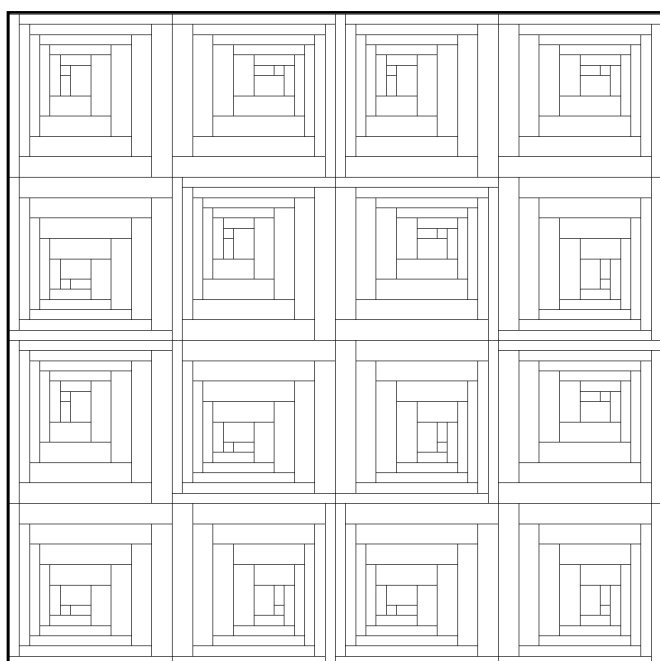
Outline of Basic foundation piecing

1. Start with enough fabric to cover the shape 1 - placed & pinned right side away from the paper on the non printed side.
2. Using an Add $\frac{1}{8}$ " (for smaller blocks) or Add $\frac{1}{4}$ " ruler method, place a card along the line between 1 & 2, fold the paper back over the card, use the ruler lip against the card to trim the seam allowance.
3. Place the pre cut fabric strip for No 2 right side up on the table, place the prepared edge on top of the strip with edges matching. Fold paper out & sew on the line between 1 & 2, anchor at each end (outer edge seams sew into seam allowance).
4. Repeat the process for each strip in number order until block is completed.
5. Trim block to correct size seam allowance, then remove all paper—sew blocks into desired arrangement for your quilt.

Cupboard to Creativity March 2023

Curved Log Cabin

Enlarge these designs and use as a colour plan for your quilt.



A

I have left off the border, so you could cut apart and re-arrange the blocks if you want to,

Or enlarge the coloured design, cut that apart and create your own arrangement of the blocks with the colour I have used.

B

C

